



Since 1997 we always insist on this sincere service



LEADYANG PRECISION TECHNOLOGY CO.,LTD.

ADDRESS: 55, Lane 357, sec. 1, Road, Wurih Dist.,
Taichung City, Taiwan.

Tel: (886)42335-8355 Fax:(886)-4-2335-1907 Post: 41467

<http://www.leadyang.com.tw> Email: LY@leadyang.com.tw

AGENT

2019/02

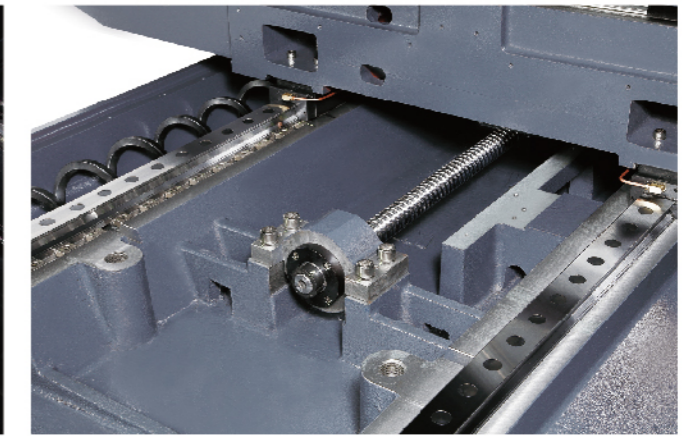
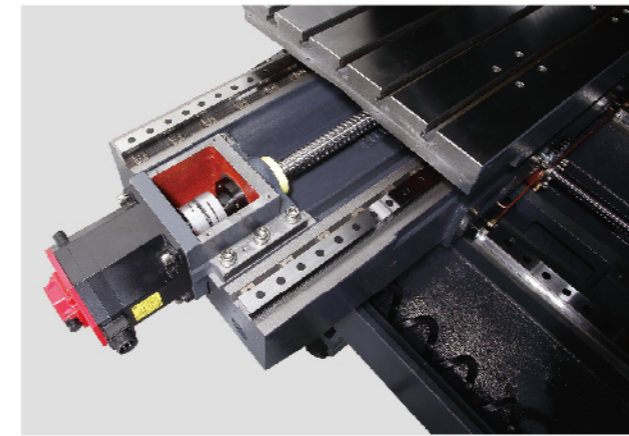
Design & Print 04-22423355

VMC-218 Vertical Machining Center

X.Y Roller Linear Way Z Box Way X.Y.Z Roller Linear Way

Various Spindle Selections

Direct transmission	BBT40 10000/12000/15000rpm
	Spindle arbor 70mm
Belt transmission	BBT50 10000/12000rpm
	Spindle arbor 90mm
Gear transmission	BBT40 10000rpm
	Spindle arbor 70mm
Belt transmission	BBT50 6000/8000rpm
	Spindle arbor 100mm
Gear transmission	BBT50 6000rpm
	Spindle arbor 100mm



C3 Class Ballscrew

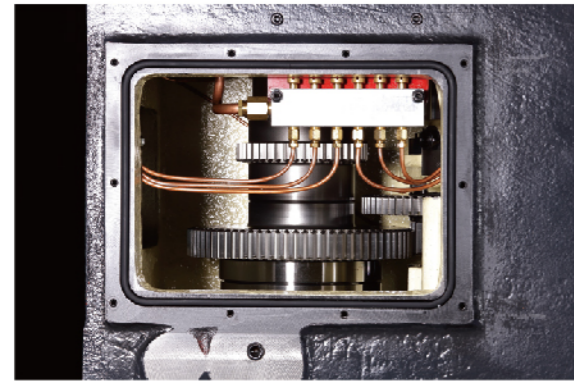
Triaxial ballscrews are equipped with diameter $\varnothing 50$ and C3 class ballscrews. All ballscrews are dealt with pre-pressing and pre-stretching to ensure lowest backlash and heat deformation.

Strengthening the Support of the Ballscrew Both Ends

The both ends of the ballscrews are installed with 4 sets supporting bearings separately. The machine base is supported by twenty-two points of leveling pads and bolts.

Gear Spindle with High-Low Torque Design

Gear designed by two stage transmission, lower speed is suitable for heavy cutting and provides the maximum torque of 520Nm. (Option 620Nm, 730Nm). Gear materials are produced by chrome molybdenum alloy steel with heat treatment and precision grind. (Made by HAMADA)

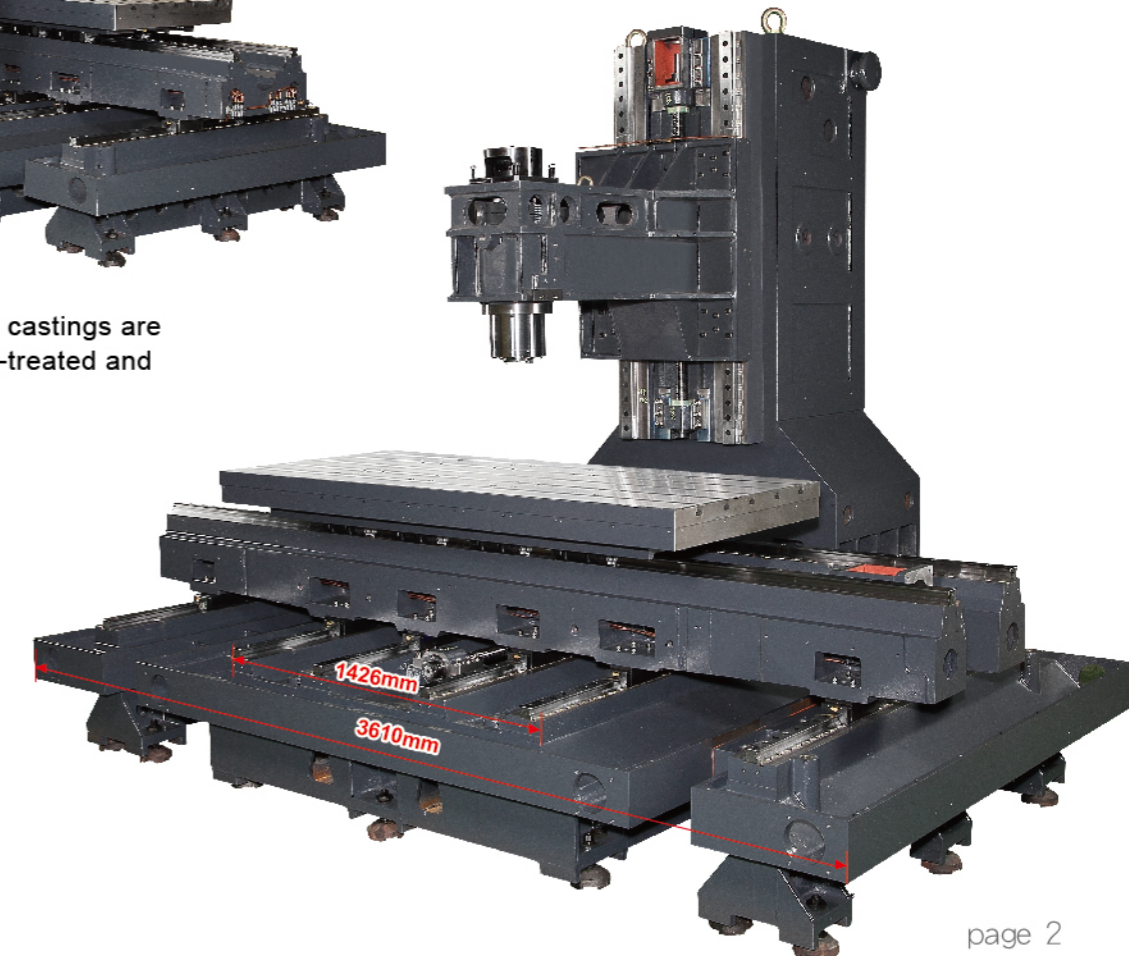


Solid and High Rigidity Structure of Body

Base, saddle, table, spindle head and column are enhanced by the ribs structure to improve machine rigidity and accuracy and to avoid machine deformation.



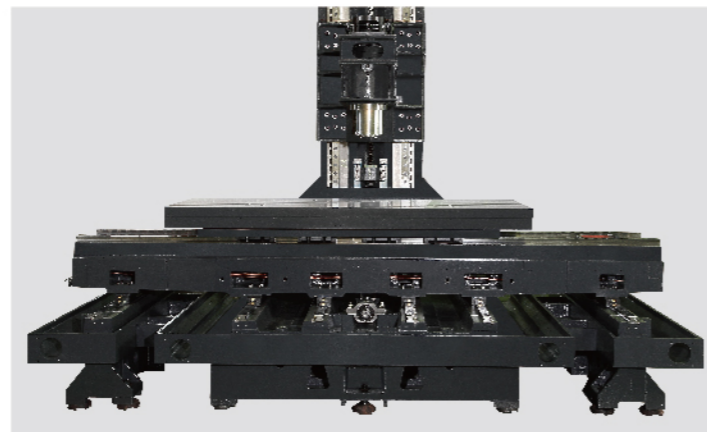
Five major MEEHANITE castings are molded processed, heat-treated and ground in Taiwan.



Heavy Loading Roller Linear Guideway

Guideway Width	Guideway Quantity	Slider Quantity
X 55mm	2	8
Y 45mm	6	12
Z 55mm	2	4

The machine base is designed as four main support guideways, and two auxiliary guideways on both sides. Using enlarged slider blocks to enhanced machine rigidity and loading.



Four Screw Chip Conveyors

Machine base is equipped with four chip conveyors to remove the chips easily.

Strict Quality Inspection Regulation

- ① Each machine has 100% full inspection.
- ② Entire machine has Geometric Accuracy Test.
- ③ Ball-Bar inspection: Use circular tester to adjust accuracy of roundness and machine.
Laser inspection: According to VDI3341 (ISO230-2) standard, machine will do multiple back and forth operation with compensation to meet the suitable machine accuracy.
- ④ forth operation with compensation to meet the suitable machine accuracy.
Each machine has individual inspection report.
- ⑤ Spindle dynamic balancing correction. This can ensure the spindle stability during high rotation speed.

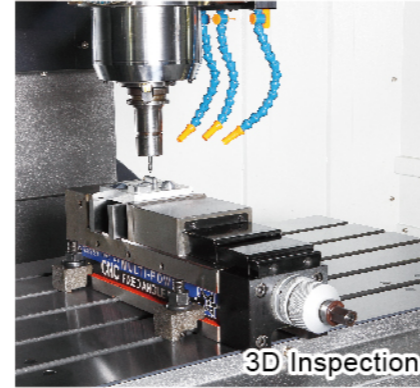
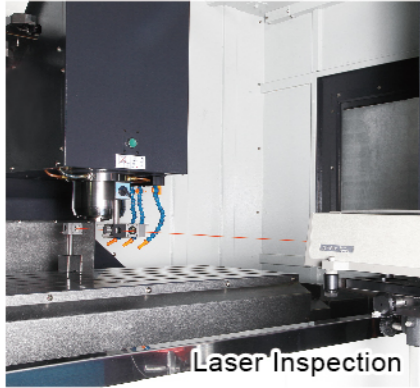
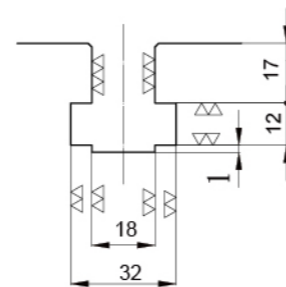
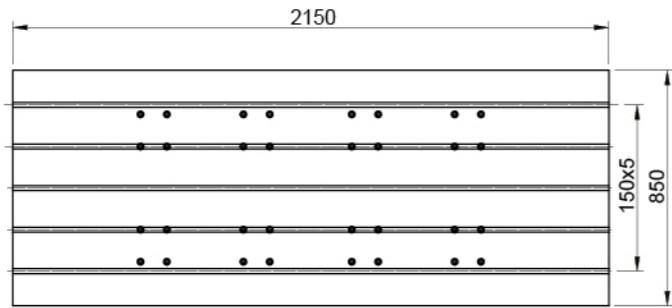
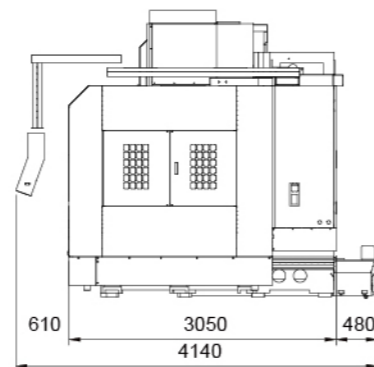
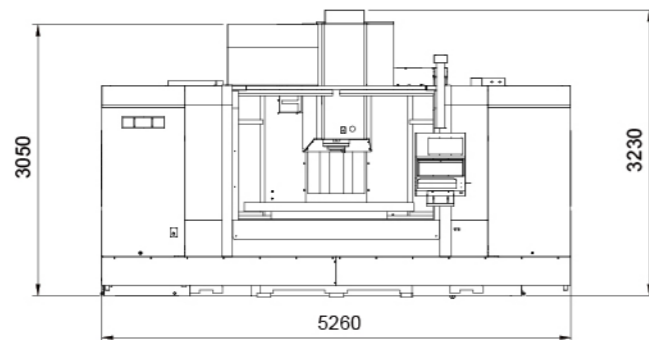


Table Dimension (mm)

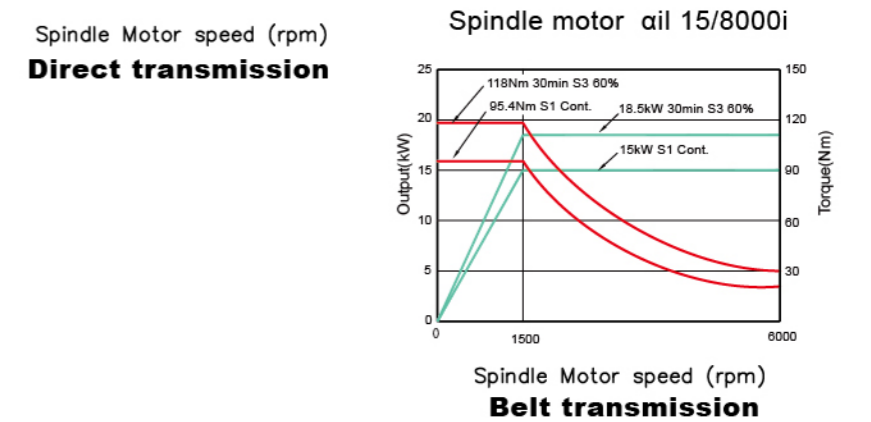
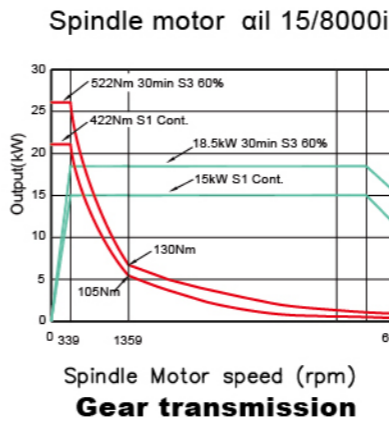
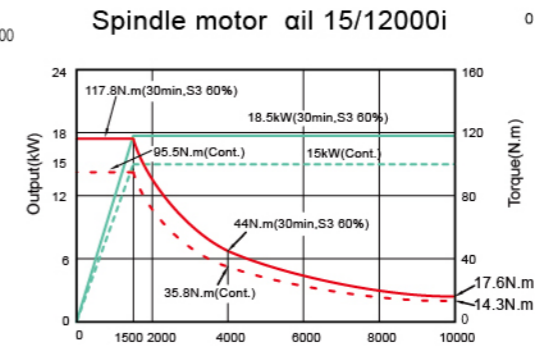
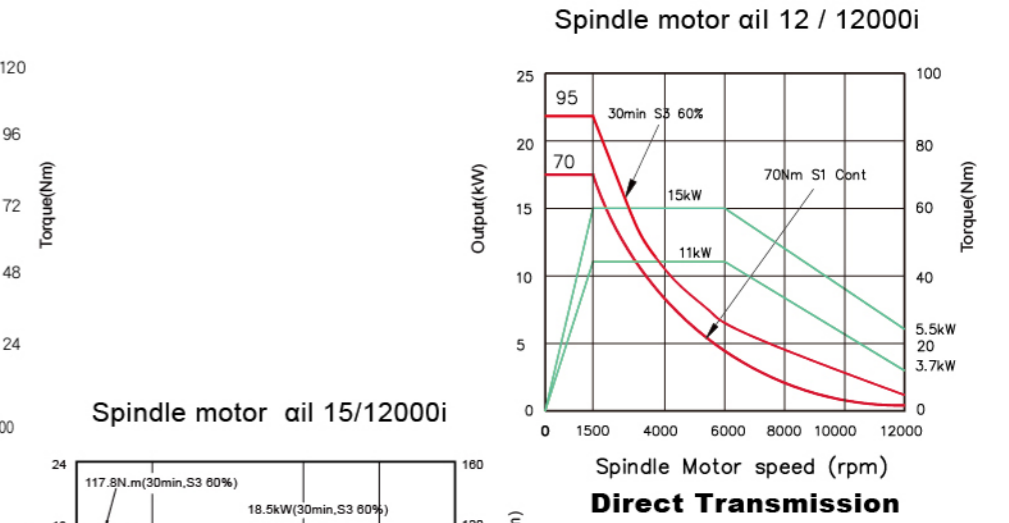
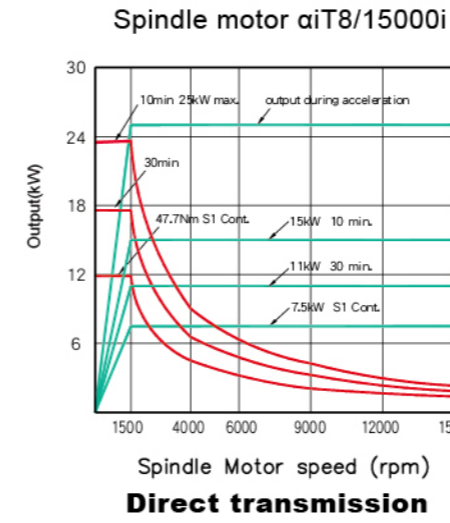


Machine Dimension (mm)

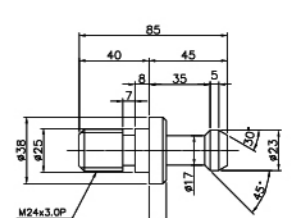
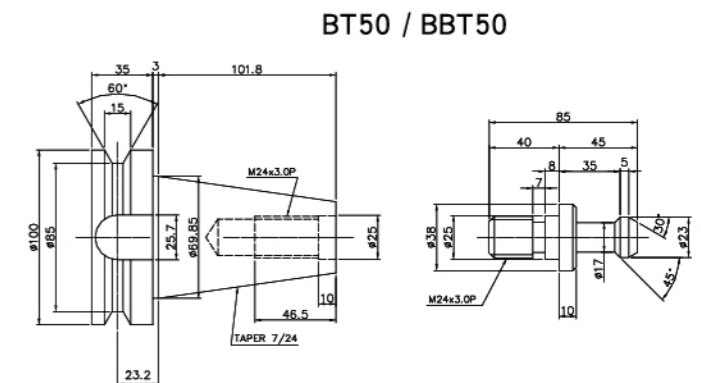
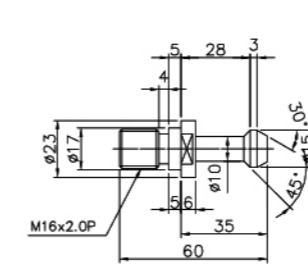
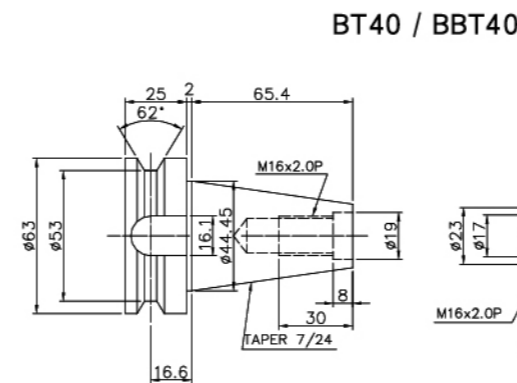


LEADYANG reserves the right to change the appearance design and specification.
And the above specifications are subject to change without notice.

Spindle Power and Torque Curve



Tool Taper Dimension (mm)



Machine Specification

Model	Unit	VMC-218BH			VMC-218DH			VMC-218BL	VMC-218DL	VMC-218GL
TRAVEL										
X/Y/Z Axes Travel	mm	2100/870/700						2100/870/700		
Spindle Nose to Table	mm	125-825						125-825		
Spindle Center to Column	mm	930			930			930	930	930
Types of Guideway (X/Y/Z)		Roller linear/ Roller linear/ Roller linear			Roller linear/ Roller linear/ Roller linear			Roller linear/ Roller linear/ Box way		
Width of Linear Guideway (X/Y/Z)mm		55/45/55			55/45/55			55/45/Box way		
Slider Quantity (X/Y/Z)	pcs	8/12/4(6)			8/12/4(6)			8/12		
TABLE										
Table Size	mm	2150x850			2150x850			2150x850		
T-Slot Size	mm	18x5x150			18x5x150			18x5x150		
Max. Table Load	kgs	2500			2500			2500		
SPINDLE										
Spindle Transmission		Belt type			Direct type			Belt type	Direct type	Gear type
Spindle Taper		BBT-40	BBT-50	BBT-40	BBT-40	BBT-50	BBT-50	BBT-50	BBT-50	
Spindle Speed	rpm	10000	6000/8000	10000/12000	15000	10000/12000	6000/8000	10000/12000	6000	
Spindle Motor (cont./30mins)	kw	11/15(15/18.5)	15/18.5	11/15(15/18.5)	7.5/11(15/18.5)	15/18.5	15/18.5	15/18.5	15/18.5	
CUTTING FEED RATE										
X/Y/Z Rapid Travel Rate	m/min	20/20/20			20/20/20			20/20/12	20/20/12	20/20/12
X/Y/Z Cutting Feed Rate	m/min	1-12m/min			1-12m/min			1-12m/min	1-12m/min	1-12m/min
A.T.C (Optional)										
Tool Change Method		Cam Driven arm type			Cam Driven arm type			Cam Driven arm type	Cam Driven arm type	Cam Driven arm type
Magazine Capacity	set	24/30/36	24/32	24/30/36	24/30/36	24/32	24/32	24/32	24/32	
Tool Change Time (Tool to Tool)	sec	2	3.5	2	2	3.5	3.5	3.5	3.5	
Max. Tool Diameter	mm	75/150	125/200	75/150	75/150	125/200	125/200	125/200	125/200	
Max. Tool Length	mm	250	300	250	250	300	300	300	300	
Max. Tool Weight	kgs	7	15	7	7	15	15	15	15	
ACCURACY STANDARD VDI3441 (ISO 230-2)										
Positioning Accuracy	mm	0.12	0.12	0.12	0.12	0.12	0.12	0.12	0.12	
Repetitive Positioning Accuracy	mm	0.007	0.007	0.007	0.007	0.007	0.007	0.007	0.007	
Ball-bar Accuracy	mm	0.012/300	0.012/300	0.012/300	0.012/300	0.012/300	0.012/300	0.012/300	0.012/300	
ACCESSORY EQUIPMENT										
Spindle Coolant Ability	kcal	1000	1500	1000/1500	3000	3000	1500	3000	3000	
Cutting Coolant Pump	w	1270x2	1270x2	1270x2	1270x2	1270x2	1270x2	1270x2	1270x2	
Grease System Pump	w	60	60	60	60	60	60	60	60	
OTHERS										
Air Pressure Requirement	kgs/cm ²	6	6	6	6	6	6	6	6	
Electric Power Requirement	kva	35	45	35	45	45	45	45	45	
Machine Weight (Approx.)	kgs	17500	17500	17500	17500	17500	18500	18500	19000	

NOTE:

1. Standard controller: Fanuc OIMF. Depend on customer's demand can choose Siemens series or Mitsubishi series.
2. LEADYANG reserves the right to change the design and planning. And the above specifications are subject to change without notice.
3. Above accuracy value is in accordance with the new machine and standard inspection status of the test data.
4. Depends on customer's request, the columns can be heightened by having one 200mm riser block as option.

Accessories

Standard Accessories

- 10.4 Inch LCD screen
- Fully enclosed splash guard
- Four screw chip conveyor for Y axis
- Three axes telescopic covers
- Heat exchanger for electric cabinet
- Spindle oil coolant system
- Spindle air blast system (Automatic controlled by M07 program)
- Spindle Cutting coolant system
- Chips flushing system on both sides
- Spindle water ring with 4 water blast
- 3-axes auto lubrication system
- Removable MPG
- Oil purifier(proportion type)
- Leveling pads and bolts
- Tri-color indicating light
- Air/ water gun for chip remove
- Work lights on both sides
- Auto power off (M30)
- RS232C interface
- Fine molding machining function
- Tool box and adjustment tools
- Accuracy inspection report
- Machine operating and maintenance manual
- E- book of FANUC program operating and maintenance manual

Optional Accessories

- HSK A63 15000/18000 rpm Spindle
- Six slider blocks for Z axis
- Independent water pump for water gun
- Oil coolant device of deep drilling
- Air conditioner for electric cabinet
- CNC rotary table
- Auto tool length measurement
- Auto workpiece measurement
- Data serve & 2G memory
- Three axes linear scales
- Oil mist blast system
- Oil mist collector
- Disc type oil skimmer
- 20/30/70 Bar C. T. S and external filtration tank
- Transformer (380V)
- Japan NSK ballscrews of three axes
- 24/30/36 Tools magazine capacity (BT40/BBT40)
- 24/30/32 Tools magazine capacity (BT50/BBT50)